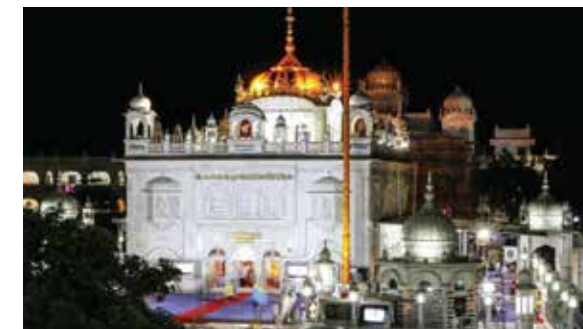


FORTRESS

Where mind meets resources



www.fortress.co.in

One of the leading
infrastructure
solution providers
in India.



ISO 9001 : 2015 & ISO 14001 : 2015 Certified Organization

1

CONSISTENTLY DELIVERING
INTEGRATED ENGINEERING
SOLUTIONS OVER 3 DECADES

2

DIVERSE CLIENTELE
SPREAD ACROSS 18 STATES
IN INDIA

3

IN-HOUSE EXPERTS AND
INTEGRATED SYSTEMS
& PROCESSES

4

THOUGHT LEADERSHIP
IN GREEN & SUSTAINABLE
SOLUTIONS



ENVIRONMENT

INDUSTRIAL

TOURISM

URBAN INFRASTRUCTURE

TRANSPORTATION

28+

YEARS OF EXPERIENCE

240+

PROFESSIONALS

500+

PROJECTS COMPLETED

₹ 2.2 Lacs Cr.

AGGREGATE PROJECT VALUE

Our Management



A S Kumar
Managing Director

.....

Founder Member of Fortress and MBA (MIT Sloan) with 34+ years of rich experience in Infrastructure Planning, Development, Financing & Management



Ajay Agrawal
Executive Director

.....

Master in Urban Planning (SPA, Delhi) with 30+ years of experience in Flagship Program and Infrastructure Planning & Development



Chhatrapal Somkuwar
Executive Director

.....

MBA (Mumbai University) & Civil Engineer with 17+ years of experience in Sustainable and Integrated Infrastructure Planning, Development & Management



Eswar Anil
Director

.....

M Tech in Civil Engg. (IIT, Kanpur) with 15+ years of experience in Infrastructure projects Designing and Implementation

Pioneering Progress, Forging the Future: Leading with Vision and Expertise

Core Team



Sandeep Bhutkar
AVP - Projects

M Tech in Environmental Engg.
with 15+ years of experience in
Infrastructure Projects



Dr. Abhijit Warudkar
AVP - PMC

PhD in Construction Management
with 15+ years of experience in
Project Management



Lukesh Kantode
AVP - Transportation

M Tech in Highway Engg.
with 17+ years of experience
in Transportation Projects



Anwar Shaikh
AVP - Projects

M Tech in Construction Management
with 18+ years of experience in
Program Monitoring & Management



Dr. Shivkumar Pujari
AVP - Environment

PhD in Environmental Engineering and M Tech in
Environmental Science with 17+ years of experience
in Environmental Planning, Design & Management



Mahendra Karne
Urban Designer

M Arch in Urban Design
with 15+ years of experience in
Urban & Regional Planning



Chandrakant Honrao
Head – MEP & ICT

M Tech in Electrical Engg.
with 17+ years of experience
in Infrastructure Projects

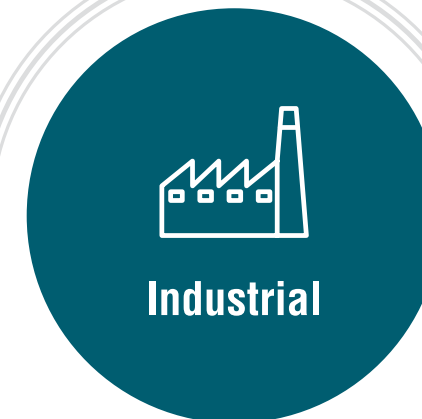
Well supported by qualified, experienced & skillful professional team of 240+ members

- ▀ Sustainability & Climate Change
- ▀ Water Supply & Sewerage
- ▀ Solid Waste
- ▀ River & Lake Rejuvenation



- ▀ City Infrastructure
- ▀ Smart Townships
- ▀ Buildings
- ▀ Utilities & ICT

- ▀ Highways & Expressways
- ▀ Urban Mobility
- ▀ Bridges & Elevated Structures
- ▀ Smart Transport



- ▀ Industrial Corridors
- ▀ SEZ / FTZ
- ▀ Industrial Parks / Townships
- ▀ Logistics Parks

- ▀ Destinations
- ▀ Circuits
- ▀ Products



Clientele



MORTH, GOI	MOT, GOI	MoHUA, GOI	NHAI, GOI	PWD, MAHARASHTRA	UD, MAHARASHTRA	BTC, ASSAM	PWD, ASSAM	HPRIDC, HP	DULB, KASHMIR
MSRDC	UPEIDA	MMRDA	PMRDA	MPIDC	GREATER NOIDA	TIDCO	APIIC	UPSIDA	MJP
PHED, MP	PWSSB	DOT, KERELA	DTTDC	MTDC	SUDA, WB	UD, ODISHA	SRINAGAR SCL	INDORE SSCL	CH. SAMBHAJI NGR MC
EAST DELHI MC	PUNE MC	MBMC	MORADABAD MC	Adani Group	L&T	SPCPL	LODHA GROUP	CAPACITE	JSW ONE HOMES

Over 100 Satisfied Clients

Environment



- 120 WS Schemes of 3000 MLD & 37000 km pipeline
- 30 Sewerage Schemes of 1000 MLD & 2000 km pipeline
- 45 SWM Projects of 1000 TPD
- 4 Rivers of 28 km & 100 lakes rejuvenation
- 3.3 Mn tree Plantation

Urban Infrastructure



- 30 City Infrastructure Projects
- 10 Smart Townships
- 3 Mn sqft Buildings and Structures
- 50 km Waterfront Development
- 100 Gardens, Green spaces & Recreational areas

Transportation



- Total 12000 km Highways & Urban Roads
- 125 NH Projects of 7000 km on PPP/EPC for NHAI & MORTH
- 4000 km of Design & 600 km of Supervision
- 4th Longest Tunnel of 7.7 km on Samruddhi Expressway

Industrial



- 3 Greenfield Industrial Nodes over 2500 Ha
- 15 Greenfield Industrial Parks & Townships over 4000 Ha
- 10 Brownfield Industrial Parks/ Townships over 2500 Ha
- 10 MSME Clusters over 250 Ha

Tourism



- 10 Destinations
- 10 Multiple Tourism Circuits
- 3 Tourism Cities
- 5 Tourism Vision Plans
- 3 Convention Centers

Pioneer in



- First PPP Project in Urban Area
- First CDP under JNNURM & Integrated Development
- First Mega Tourism Circuit
- Second Industrial Node
- Largest Green Sink Expressway

Serving over entire Project Life Cycle



Planning, Design & Engineering

- Project Development Strategy
- Surveys & Investigations
- Master Planning
- Feasibility Studies
- Architectural Design
- Design Engineering, BIM
- MEP & ICT Design
- SIA/EIA
- Financial & Economic Analysis
- Detailed Project Reports
- GFC Drawings
- Contract Management



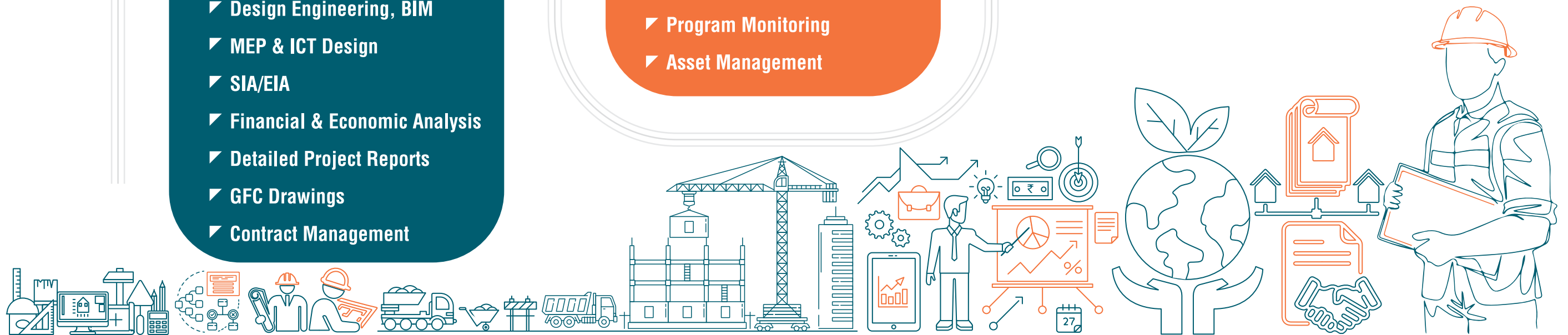
Project Management

- Project Management/ Supervision and Quality Control/ Authority Engineer/ Independent Engineer
- General Consultant
- IRMA/TPIA/Audits
- Lender's Engineer
- Program Monitoring
- Asset Management



Advisory

- Transaction Advisory
- Economic Planning
- Strategic Advisory
- Capacity Building
- Sustainability Strategy





Key Projects





Ch. Sambhaji Nagar Water Supply Scheme

24x7 Water Supply Scheme for 2 Mn population with 1900 Km Distribution & 78 Km Rising Main, 392 MLD WTP, 2 MBR, 49 ESR & 4 GSR with 104 million CuM capacity | **Rs. 2750 Cr**



Nanded District Water Supply Schemes

Multi Village Water Supply Scheme in Nanded District for 350+ Villages under JJM | **Rs. 1400 Cr**



Water Supply Scheme in Gwalior Region

4492 Villages Water Supply Scheme in Gwalior, Guna, Ashoknagar, Shivpuri, and Datia districts under JJM | **Rs. 1050 Cr**



Ch. Sambhaji Nagar Sewerage Scheme

Integrated Underground Sewerage System for 2 Mn population with 603 km of collection network, SPS, 216 MLD STP, & SCADA | **Rs. 470 Cr**

Environment



AMRUT Projects in Orissa

Water Supply, Sewerage, Septage, Drainage, Urban Transport, and Parks in Orissa | **Rs. 1329 Cr**



Solid & Liquid Waste Management, J & K

Solid & Liquid Waste Management under SBM in 40 ULBs of Kashmir Division



Jhelum Riverfront, Srinagar

5.5 km Jhelum Riverfront Development with emphasis on 'Bringing River to the People' | **Rs. 123 Cr**



Best Built Environment Award Winning Project



Indore Riverfront

4 Km Kahn-Saraswati Riverfront Development with rejuvenation, heritage conservation, recreation and public amenities | **Rs. 100 Cr**

Environment



Pune Riverfront

9 Km Mula-Mutha Riverfront Development with rejuvenation, riverbank protection, recreation and public amenities | **Rs. 870 Cr**



Plantation along Samruddhi Expressway

Carbon Neutral Green and Scenic Corridor of 701 km with plantation of 3.3 Mn plants & landscaping of 24 interchanges Spread over 500 Ha | **Rs. 920 Cr**



- 48 MLD STP at Mira Bhayandar | **Rs. 187 Cr**
- Mira Bhayandar Water Supply Scheme | **Rs. 500 Cr**
- Kolhapur SWM & Waste to Energy Project | **Rs. 50 Cr**
- Multi Village Water Supply Scheme in Ch. Sambhaji Nagar | **Rs. 4000 Cr**
- Lake Conservation Panvel | **Rs. 65 Cr**



- AMRUT Projects in Assam | **Rs. 657 Cr**
- Malegaon City Underground Sewerage System | **Rs. 260 Cr**
- Plantation along Mumbai-Pune Expressway | **Rs. 65 Cr**
- Multi Village Water Supply Scheme in Jalna District | **Rs. 2412 Cr**
- Amritsar Water Supply and Sewerage Projects under JICA | **Rs. Cr 185 Cr**



Urban Infrastructure



Nanded City Infrastructure

Integrated City Infrastructure spread over 150 sq km in Nanded | **Rs. 733 Cr**



Tirthkshetra Infrastructure Development, Shegaon

Integrated Tourism and city infrastructure over 15 sq km in Shegaon, Buldhana | **Rs. 538 Cr**



Smart City, Srinagar

Smart City Infrastructure over 246 sq km | **Rs. 3634 Cr**



Panvel City Infrastructure

Integrated Infrastructure at Panvel over 110 sq km | **Rs. 510 Cr**

Urban Infrastructure



Sachkhand Gurudwara Precincts, Nanded

Integrated infrastructure including Gurudwara precincts, Congregation Hall, Yatri Niwas & Recreational Garden over 15 Ha | **Rs. 115 Cr**



GST Bhawan, Pune

Administrative Green Building having 2 Lacs sqft BUA & 5 stories | **Rs. 96 Cr**



Manora Amdar Niwas, Mumbai

State-of-the-Art Manora Amdar Niwas for Maharashtra Legislature having 12 lacs sqft BUA & 42 storied | **Rs. 1269 Cr**



PIECC Township, Pune

Integrated Infrastructure for PIECC township spread over 98 Ha at sector 5 & 8 | **Rs. 130 Cr**

Urban Infrastructure



DBLP Node New Town near Shirdi

Agro-prosperity and sustainable new town over 1967 Ha along Maharashtra Samruddhi Mahamarg



FINTECH City, Chennai

State-of-the-Art FINTECH cities at Nandambakkam (45 Ha) and Kavanoor (105 Ha) | **Rs. 676 Cr**



- Nanded-Waghala Municipal Corporation HQ & Complexes on PPP | **Rs. 110 Cr**
- New School Building at Kausa, Thane | **Rs. 20 Cr**
- Kolhapur Holy City Infrastructure Project | **Rs. 2100 Cr**
- Bhiwandi-Nizampur Municipal Corporation HQ on PPP | **Rs. 27 Cr**
- Residential & Commercial Development over 18 Ha at Coimbatore | **Rs. 196 Cr**



- Habitat & Trade Center at Gwalior | **Rs. 33 Cr**
- Affordable Housing Township, Nagpur | **Rs. 68 Cr**
- Riverside Township Development over 200 Ha at Raigad | **Rs. 80 Cr**
- Medicity Kolhapur over 8 Ha | **Rs. 120 Cr**
- Redevelopment of Municipal Colony over 10 Ha at Usmanpur, Delhi | **Rs. 900 Cr**



Transportation



Maharashtra Samruddhi Expressway

6 lane access controlled greenfield expressway of 78 km Package V with 14 km tunnel and viaduct
| Rs. 6900 Cr



Expressways & National Highways across India

125 no. of Expressways/ NH Projects with total length of 8000 km across India for NHAI/ MoRTH as Financial cum Legal Consultant | Rs. 115000 Cr



Maharashtra Road Improvement Program

2/4/6 lanning of 1150 km SH with bridges in 12 districts under HAM/EPC | Rs. 3411 Cr



Chhattisgarh Road Connectivity Project

2/4 lanning of 810 km SH/MDR with bridges in 13 districts under ADB funding | Rs. 3400 Cr

Transportation



Axom Mala Road Project, Assam

2/4 lanning of 460 km SH/ MDR in 11 districts with bridges on Subhansari and Luit Rivers under AIIB/ NDB & State funding | **Rs. 4200 Cr**



NH - 548 D (Ahmedpur - Patoda Section)

2 lanning of NH 548 D of 162 km with bridges in Ahmedpur - Patoda section, Maharashtra | **Rs. 1010 Cr**



NH - 848 (Vadape - Thane Section)

8 lanning & service roads of 20 km with Creek bridges, ROB, Grade Separator & Toll Plaza | **Rs. 1182 Cr**



Himachal Pradesh Urban Roads Improvement Project

Urban Roads of 105 km and Mobility improvement in Kullu & Mandi cities | **Rs. 1358 Cr**

Transportation



Purvanchal Expressway

Wayside Amenities at 8 locations over 80 Ha along 340 km long Purvanchal expressway | **Rs. 200 Cr**



Digital Project Management Platform (5D BIM)

5D BIM with ERP, BA & GIS for key infrastructure projects of MSRDC including Samruddhi Expressway, MPML & VBSL | **Rs. 350 Cr**



- 4 laning of NH - 48 & service roads of 133 km with bridges
- 2 laning of NH 548 C (Satara - Tembhurni Section) of 138 km | **Rs. 960 Cr**
- Shegaon City roads of 32 km with bridges | **Rs. 216 Cr**
- Latur City roads of 42 km | **Rs. 127 Cr**
- 8 laning of Mumbai Western Expressway of 23 km | **Rs. 840 Cr**



- Panvel Urban Road Safety Audit of 35 km
- NSV & Condition Assessment of 520 km NH/ SH in Kerala
- Transport Nagar at Ch. Sambhaji Nagar | **Rs. 80 Cr**
- Bus Stand/ Port at Karad, Satara
- Dehradun-Mussoorie Passenger Ropeway of 5.5 Km | **Rs. 290 Cr**



Industrial



Infrastructure Works, Noida

Infrastructure works in Noida over 203 sq km | **Rs. 2100 Cr**



Integrated Industrial Township, Greater Noida

Integrated infrastructure for greenfield industrial township over 302 Ha at Greater Noida | **Rs. 426 Cr**



Shendra Industrial City, Ch. Sambhajnagar

Integrated infrastructure for greenfield industrial city over 845 Ha | **Rs. 656 Cr**



Electronics Hardware Manufacturing Cluster, Tirupati

Greenfield EPMC park over 200 Ha with plug and play facility over 8 lacs sqft | **Rs. 339 Cr**

Industrial



Bodoland Economic & Livelihood Development Projects

Livelihood Enhancing Economic Development Projects in Bodoland Territorial Region at 12 locations over 80 Ha | **Rs. 367 Cr**



Diamond, Gems & Jewellery Park, Indore

Development of Diamond, Gems & Jewellery Park SEZ / DTA on PPP | **Rs. 260 Cr**



Industrial Township/ Park, Gwalior

Readymade Garment Park (40 Ha), Multi-product industrial area (165 Ha), upgradation of Industrial Park (100 Ha) | **Rs. 360 Cr**



Industrial Clusters, Indore

Namkeen Cluster, Apparel Cluster & Pharma Cluster over 48 Ha at Indore | **Rs. 32 Cr**

Industrial



Agro Industrial Node near Ch. Sambhaji Nagar

New Agro-Industrial node along Samruddhi Expressway over 1050 Ha



Greenfield Industrial Park, Lalbaug, Dhar

Integrated Greenfield Multi-product Park over 200 Ha | **Rs. 188 Cr**



- Food Park at Shivpuri over 25 Ha
- Industrial Area at Balaghat over 92 Ha | **Rs. 60 Cr**
- Infrastructure Works at GNIDA over 380 Ha | **Rs. 1283 Cr**
- Integrated Industrial Estate Haridwar over 566 Ha | **Rs. 200 Cr**
- Integrated Greenfield Industrial Park at Pilibhit over 375 Ha | **Rs. 550 Cr**



- Plastic Park at Gwalior over 40 Ha
- Infrastructure Works at YEIDA over 759 Ha | **Rs. 928 Cr**
- Special Economic Zone at JNPT over 277 Ha | **Rs. 442 Cr**
- Multi-Product Industrial Areas in Indore region over 265 Ha | **Rs. 215 Cr**
- Upgradation of Iron & Steel Market yard at Navi Mumbai over 302 Ha | **Rs. 191 Cr**



Tourism



Kumarkom Tourism Destination, Kerala

Kumarkom & Cheepunkal destination development over 52 sq km sustainable backwater & houseboat tourism | **Rs. 1150 Cr.**



Kovalam - Poovar Tourism Corridor, Kerala

Kovalam - Poovar Tourism Corridor over 18 km with sustainable infrastructure, tourism products | **Rs. 4800 Cr**



Lonar Tourism Destination Development, Buldana

Conservation on Ramsar site "Lonar Crater", heritage & historical temples, wildlife and development of amenities & facilities | **Rs. 370 Cr**



Shreekshetra Mahurgadh Tourism Destination, Maharashtra

Integrated Religious, Eco & nature tourism development | **Rs. 216 Cr**

Tourism



Vagamon - Thekkady Eco Tourism Circuit, Kerala

Vagamon - Thekkady Eco Tourism Circuit with Meadows, Pine forest, adventure & nature tourism under Swadesh Darshan Scheme | **Rs. 55 Cr**



Solapur - Tuljapur Mega Tourism Circuit

Solapur - Pandharpur - Akkalkot - Tuljapur Mega Tourism circuit having tourist amenities and facilities | **Rs. 44 Cr**



Sant Dyaneshwar Recreational Garden, Paithan

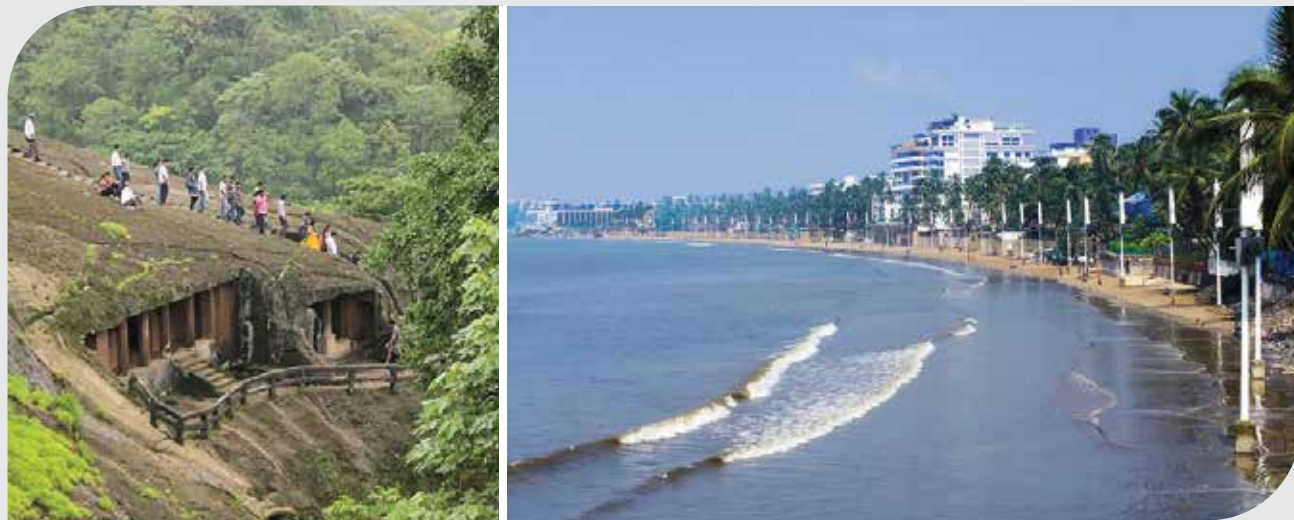
Integrated and Vibrant recreational garden with water sports, musical dancing laser fountain, Santvani, etc. over 65 Ha | **Rs. 150 Cr**



Delhi Haat, Janakpuri

Indian Art & Heritage Spawling Complex over 2.4 Ha for craft, cuisine & cultural activities | **Rs. 120 Cr**

Tourism



Mumbai Suburban Tourism Plan

Tourism Plan covering SGNP, Beaches, Historical sites, Bollywood, Convention, etc. | **Rs. 635 Cr**



Indore Convention Center

International Convention-cum-exhibition center and Business complex over 12 Ha | **Rs. 200 Cr**



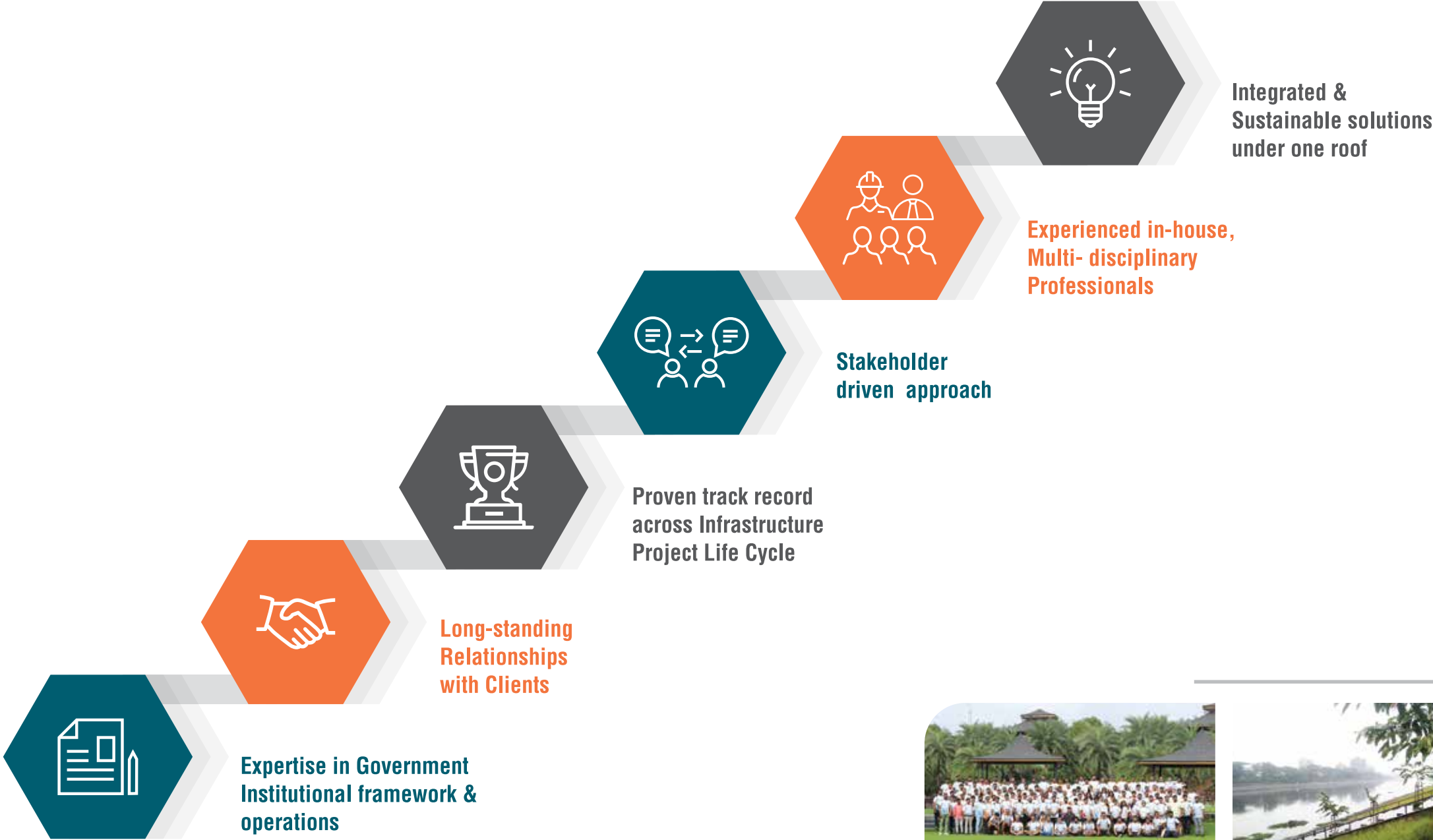
- Delhi Heritage Tourism Circuit | **Rs. 310 Cr**
- Madhya Pradesh Heritage Tourism Circuit | **Rs. 300 Cr**
- Lakshadweep Tourism Circuit | **Rs. 800 Cr**
- Kerala Nature Tourism Circuit | **Rs. 260 Cr**
- Calicut Convention Center | **Rs. 120 Cr**



- Buddhist Circuit in Maharashtra | **Rs. 25 Cr**
- Nanded Mega Tourism Circuit | **Rs. 45 Cr**
- Buldana District Tourism Plan | **Rs. 500 Cr**
- Nashik Tourism Circuit | **Rs. 23 Cr**
- Khajuraho Group of Heritage Monuments cleanliness & adoption plan under CCI



Why Fortress



Contact Us



FOR SERVICES, PLEASE CONTACT

Corporate Office:

204, Lotus Park, Road No. 16,
Wagle Estate, Thane (W) - 400604,
Mumbai Metropolitan Region

✉ chhatrapal@fortress.co.in

Regional Office - North:

1118, 11th Floor,
Tower-A, I-Thum Tower, Sector-62,
NOIDA - 201301, NCR Delhi

✉ ajay@fortress.co.in

Regional Office - South:

91, Springboard Business Hub Pvt. Ltd.,
Gopala Krishna Complex, MG Road,
Ashok Nagar, Bengaluru - 560025

✉ eswaranil@fortress.co.in

☎ +91 - 22 - 6288 7900 | +91 - 22 - 2200 7973 | ✉ fortress@fortress.co.in | 🌐 www.fortress.co.in

Follow us on @fortressinfraco @fortressinfracon